

Mansafes

Mansafe units enable Caterpillar and Komatsu machinery to use brass pin lever pressure release radiator caps in order to meet Australian mine regulations.

Caterpillar Mansafe Adaptor

- › Large cap with 82mm opening
- › Painted in Cat Yellow
- › O-ring used to give an improved seal
- › 10mm overhang to shield against seal



PART NO.

CATMANSAFE
Includes Mansafe Unit, Cap and O-ring.

CATMANSAFE ONLY

CAPCOXMKW20

CATMANSAFE O-RING

Caterpillar Mansafe Adaptor - Small

- › Replacement for OEM header tank screw on radiator caps.
- › Adaptor to allow medium minesafe radiator caps to be fitted.



PART NO.

CATMANSAFE-SML
Includes Mansafe Unit, Cap and Seal.

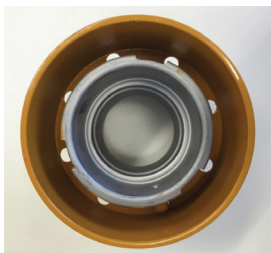
CATMANSAFE-SML ONLY

CAPCOXM16

CATMANSAFE-SML SEAL

Komatsu Mansafe Adaptor

- › Reduce coolant loss, top up frequency and ensure correct coolant system operation (Non-recovery 20psi cap allows OEM cap to function as designed).
- › Large cap with 82mm opening (quick fill point as per original OEM design).
- › New low profile, one piece design with guard.
- › Painted in Komatsu Yellow.



PART NO.

KOMMANSAFE
Includes Komatsu Mansafe quick fill Adaptor, Cap and Seal.

KOMMANSAFE ONLY

KOMMANSAFE CAP

KOMMANSAFE SEAL